



NEOTECH

Metaverse as a Service
(MaaS)

WE UNDERSTAND

...the challenges of replicating real-world infrastructure in the metaverse, from expenses to time constraints.



PROBLEM

Real-world companies face hurdles and costs when trying to duplicate their operations in virtual environments

SOLUTION

A 3D digital infrastructure platform, which simplifies the integration of real-world assets into the metaverse



WITH NEOTECH

...businesses can seamlessly integrate it into metaverse and gaming for a richer, cost-effective, and emotionally connected digital world.



Increase developer productivity

70%



Reduction in costs for developing 3D virtual replicas

80%

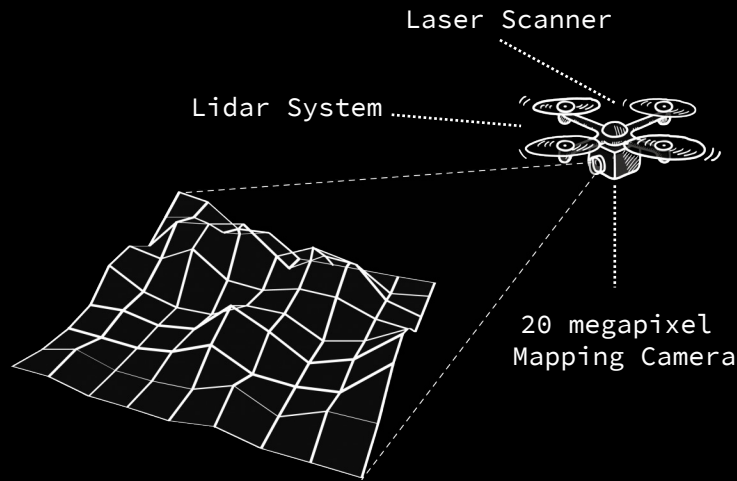
HOW?

Utilizing a cutting-edge blend of Aerial LiDAR, Photogrammetry, Mobile Mapping, and Terrestrial LiDAR Scanning, our approach is a symphony of hardware precision and software innovation. Our arsenal includes 360-Degree Cameras for immersive captures and drones for dynamic aerial perspectives. To bring these 3D digital replicas to life, we harness the power of Simulation and Modeling Software, creating a seamless bridge to Metaverse scenarios.

LIDAR / LASER AND PHOTOGRAMMETRY

AERIAL

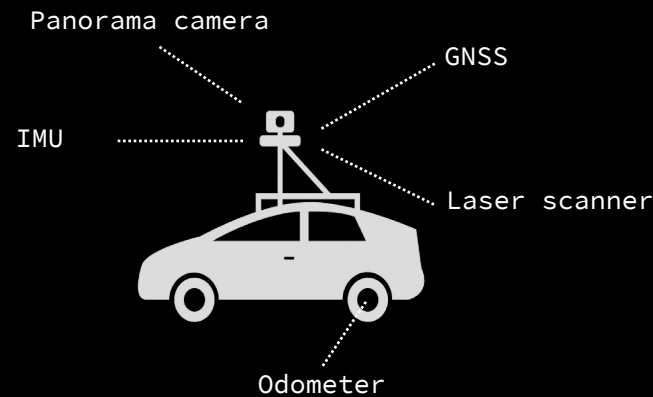
DRONES



Aerial drone scanning with LiDAR and laser technology revolutionizes mapping by employing airborne sensors to capture precise 3D data. This advanced technique enhances mapping accuracy, allowing for detailed and efficient creation of digital landscapes, essential for diverse applications and virtual world development.

TERRESTRIAL

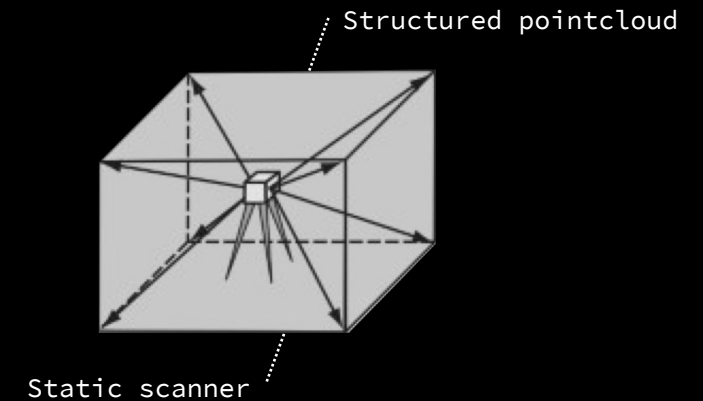
MOBILE SCAN



Terrestrial scanning via vehicle-mounted LiDAR technology delivers high-precision 3D data for mapping and modeling. Mounted on vehicles, LiDAR sensors rapidly capture detailed information of the environment, offering a comprehensive solution for urban planning, infrastructure development, and immersive digital replication.

TERRESTRIAL

TLS INDOOR

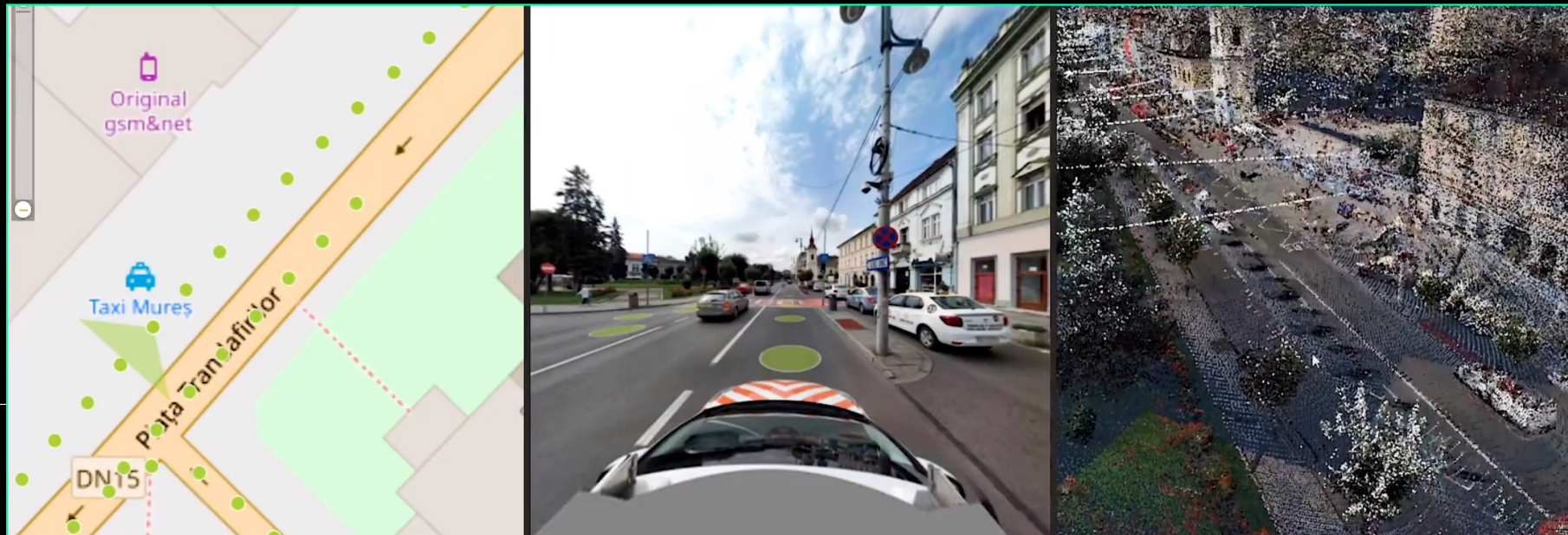


TLS (Terrestrial Laser Scanning) for indoor environments employs laser technology to meticulously capture detailed 3D data. This precise scanning method is ideal for creating digital replicas of indoor spaces, enabling applications in architecture, facility management, and virtual simulations.

IN ACTION

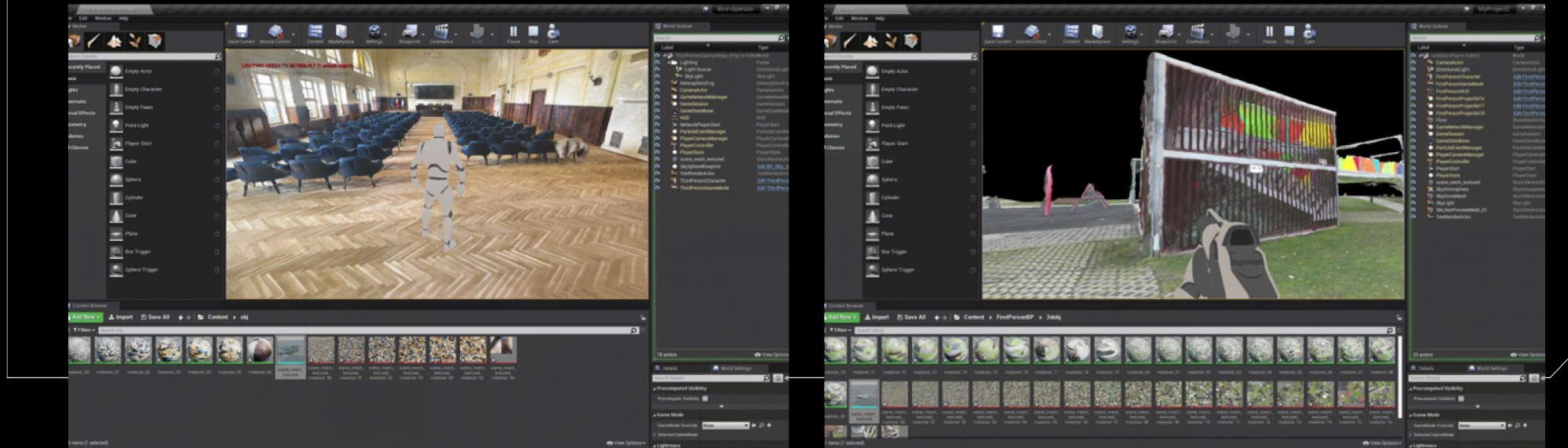
In depth demo

<https://www.youtube.com/watch?v=y7ETgu-0pw8&t=59s>



IN ACTION

This cutting-edge data integrates effortlessly into platforms like Unity or Unreal Engine, drastically reducing time and costs.



PRODUCT

NEOTECH is your gateway to the metaverse seamlessly unifies imagery, Digital Twins, locations into one 3D universe. It enables organizations of all sizes, analyze, find and integrate 3D map data through an easy-to-use platform.

FOR EDUCATIONAL INSTITUTIONS

- School tours.
- Free Meeting tool.
- 3D meeting rooms.
- Banner ads.
- Free vrStore booth.
- Business info.
- Promote community.
- 10,000+ courses.
- Free E-class system.

ENTER

ENTERTAINMENT & SPORTS

- Cost-effective technology.
- Optimize event areas.
- Enhance attendance.
- Boost virtual events.
- Increase attendance rate.
- 360-degree stage design.
- Product info, news, schedules.

ENTER

TOURISM

Play a significant role in taking the booking experience to another level. They can offer descriptions, images, and videos. With the metaverse, they can offer immersive experiences to travelers and guests. Travelers can use it to explore destinations as if they were there.

ENTER

GAMING

The is one of the most important component that form the Neotech world. Drag and drop in Unitty or Unreal engine

ENTER

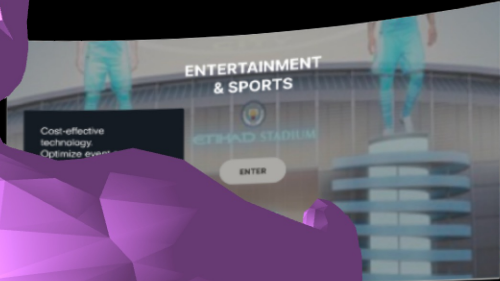
MARKETPLACE

EXPLORE

SOCIAL

The metaverse will bridge the communication gap and make it impossible to experience physical separation. You can freely socialize in a virtual world where you can collaborate, connect, and communicate with your coworkers, clients, friends, and family members.

ENTER



MARKET ANALYSIS

The global Metaverse Market was valued at \$62.1 Billion in 2021, and it is estimated to be valued over USD 1.6374 Trillion by 2030 according to Precedence Research.

TAM

\$1.6T

Blockchain Gaming
NFTs
DeFi+GameFi
Esports
Virtual Worlds
Entertainment
Digital Fashion

Global digital twin market size is projected to grow to \$110B by 2028

Gartner reports that 25% of people will spend an hour per day in the metaverse by 2026 for work, shopping, education, entertainment, and social. What's more, 30% of organizations in the world will have products and services ready for metaverse.

SOM

\$540B

Blockchain Gaming
NFTs
Crypto
Esports
Virtual Worlds
Entertainment
Digital Fashion

SAM

\$129B

Blockchain Gaming
Crypto
Virtual events
Virtual Worlds
Entertainment
Real estate

Source:
<https://www.gartner.com/en/newsroom/press-releases/2022-02-07-gartner-predicts-25-percent-of-people-will-spend-at-least-one-hour-per-day-in-the-metaverse-by-2026>

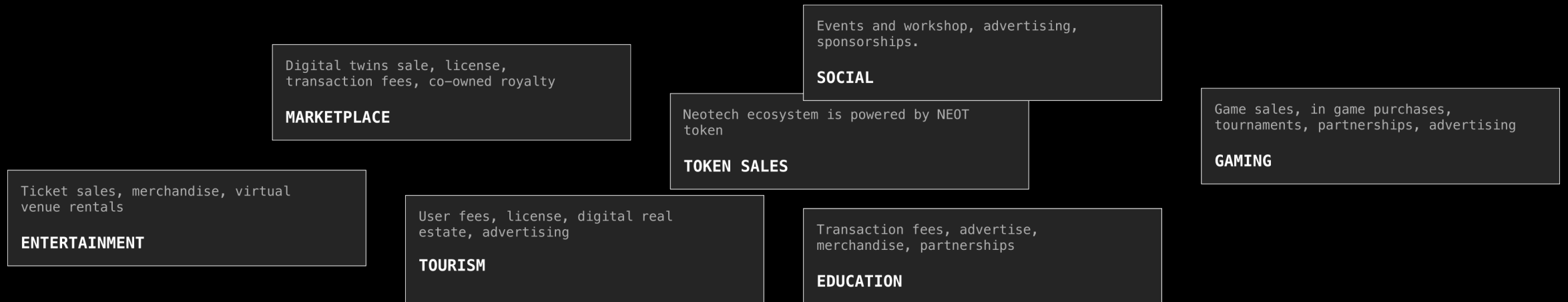
COMPETITIVE ADVANTAGES

- Over a decade of expertise in digital mapping, setting us apart with our exceptional precision.
- Unmatched ease of downloading and integrating real-world digital twins.
- Our user-friendly platform empowers users with any level of coding skills.
- Our commitment to innovation and user-centric design drives us to shape the metaverse's future.



REVENUE STREAM

Building the Metaverse with Real-World Data Neotech Revolutionizes Data Integration Developers Can Craft Metaverse Worlds in Minutes, Unlocking Unlimited Potential



ROADMAP

Q4 2023

Advisors & Partners

Core team formation
Key Partnerships
Strategic investments

Q1 2024

Token Launch

Community marketing
Smart contract / Private Sale / TGE /
Live on DEX & CEX/ Token ecosystem &
Launch of web3.0 interface

Q2 2024

Business development

Integration of databases and formalising
structure for business mode
Adaptation of proprietary software for
Neotech partners

Q3 2024

Expansion

Expansion of Neotech tech to include
more uses
Research & Partnerships

Q4 2024

Tech partners lined up
Potential integrations and brand
Integration of databases and
formalising structure for business
model

Q1 2025

Alpha, Beta, Initial NFT Sale &
Marketplace Platform
Base layouts for Neotech metaverse
3D modeling of design

Q2 2025

Space goes live, first events test
and full production follows
Build out internal spaces and
databases of templates for users
Marketplace

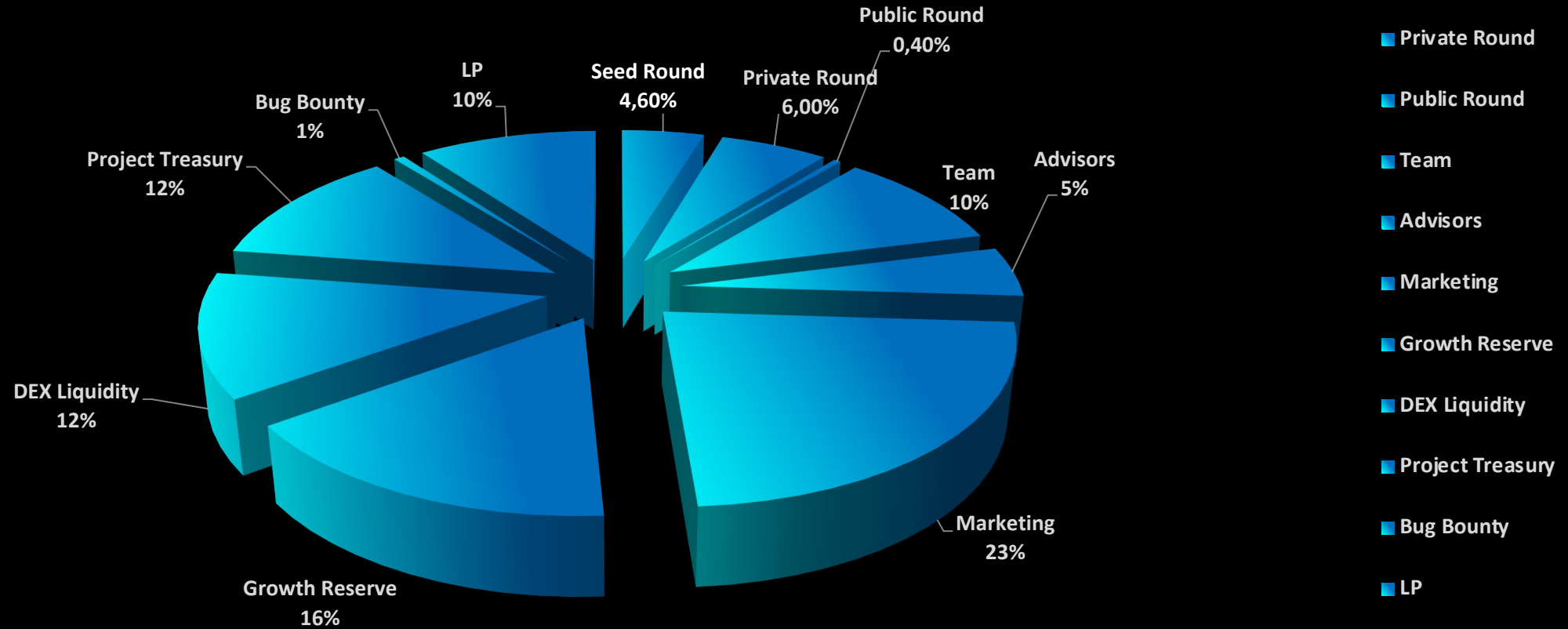
Q3 2025

Tech partners to provide solutions
Enables other project to be
distributed alongside Neotech
ecosystem.

Q1 2026

Continued Tech Development for
Neotech's Tiers

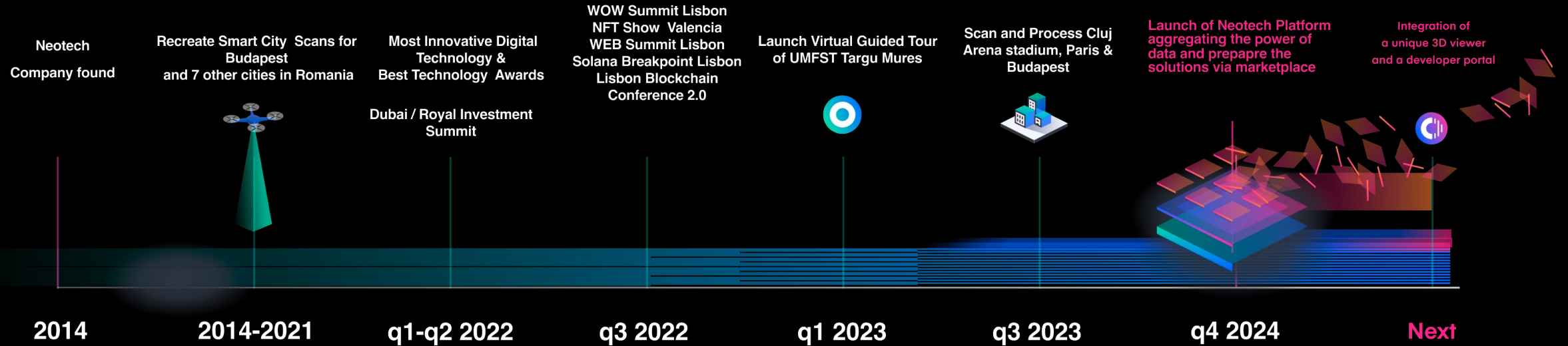
TOKENOMICS



- Seed Round
- Private Round
- Public Round
- Team
- Advisors
- Marketing
- Growth Reserve
- DEX Liquidity
- Project Treasury
- Bug Bounty
- LP

Seed Round	Private Round	Public Round	Team	Advisors	Marketing	Growth Reserve	DEX Liquidity	Project Treasury	Bug Bounty	LP	Total
NEOT 11.500.000	NEOT 15.000.000	NEOT 1.000.000	NEOT 25.000.000	NEOT 12.500.000	NEOT 57.500.000	#NAME?	NEOT 31.000.000	NEOT 30.000.000	NEOT 1.500.000	NEOT 25.000.000	#NAME?
4,60%	6,00%	0,40%	10,00%	5,00%	23,00%	16,00%	12,40%	12,00%	0,60%	10,00%	100,00%

COMPANY TIMELINE



NEOTECH

THE PLACE FOR ANYONE FROM ANYWHERE TO BUILD
VIRTUAL REALITY

With Neotech the metaverse becomes an authentic mirror of reality, reducing costs and enriching experience